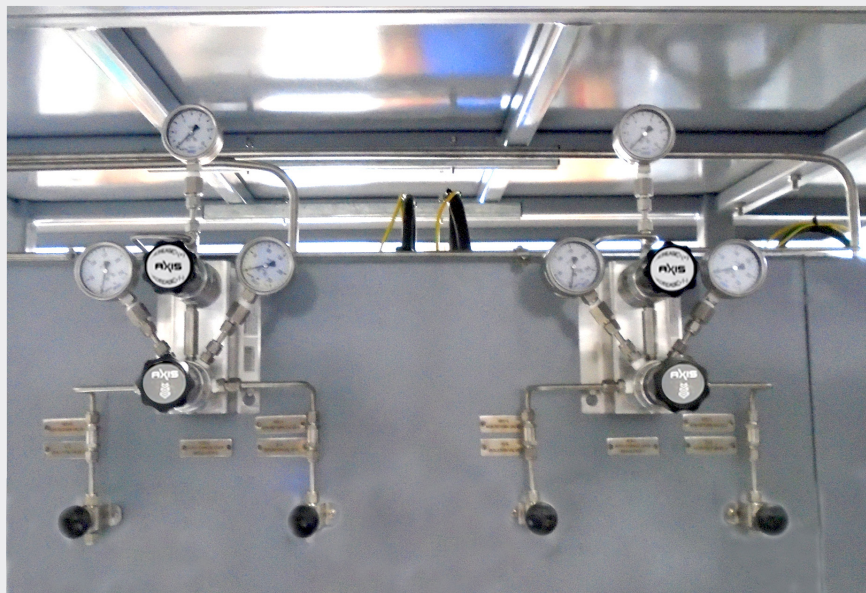


# Auto Change Over Unit

## ACOU1



ACOU1

### FEATURES

- » Economical
- » Self-Standing
- » Maintenance Free
- » Ease of maintenance
- » Ease of Installation
- » Mounting provision of cylinders with clamping arrangement
- » Compact Design

### ADVANTAGES

- » Less space occupied due to horizontal installation
- » Used up to 300bar and 170°C temperature media
- » Highly reliable for continuous operation
- » Design for uninterrupted gas flow for stored gas cylinder
- » Eliminate costly system downtime and maintenance
- » Optional low-pressure alarm can be provided from each bank
- » Ensure constant pressure and flow to system

### APPLICATIONS

- » Gas Chromatograph Measurement
- » Laser Gas System
- » High Volume Gas Manufacturing Facilities
- » Back-up system for Compressor
- » Generators or other plant air sources
- » Applicable where replacing and refilling frequently
- » Refineries
- » Hydro Carbon fluid detection

### DESCRIPTION

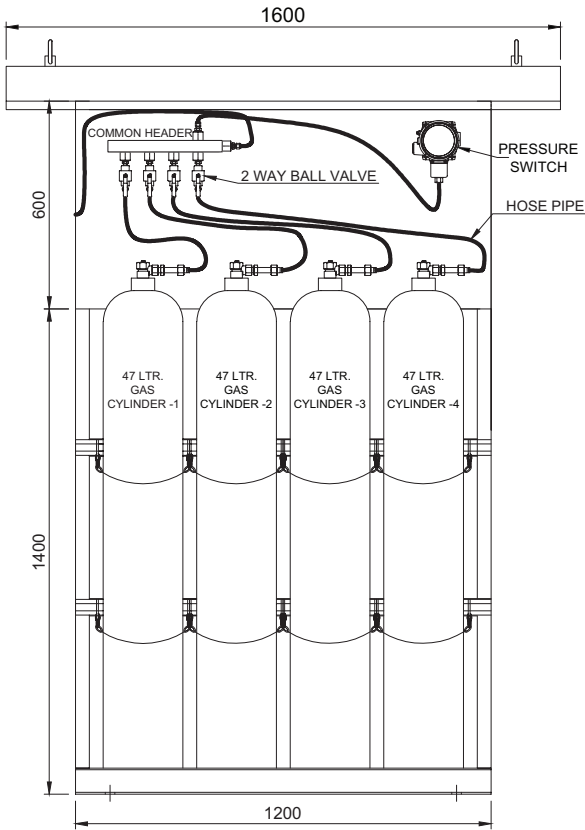
Refer typical diagram of ASPL Auto change over unit where filled cylinders in Bank- A and Bank- B connected to inlet of Auto change over regulator.

In first stage regulator of auto changeover unit fixed amount of gas pressure will be controlled and in second stage means line regulator will be adjusted with knob to achieve desire system pressure of gas. This two-stage pressure regulation shrinks the supply pressure effect caused by depleting gas cylinders.

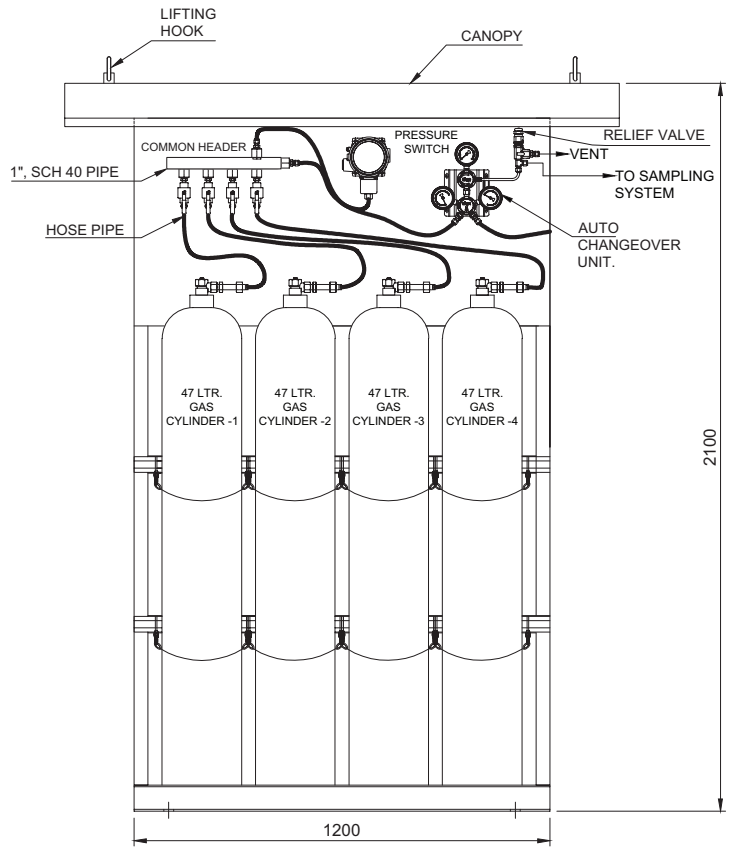
During operation when Gas supply Bank-A pressure reduced to Predefined level then it will auto changeover to Bank-B to continue supply of gas. Empty cylinders of Bank-A can be taken for refilling.



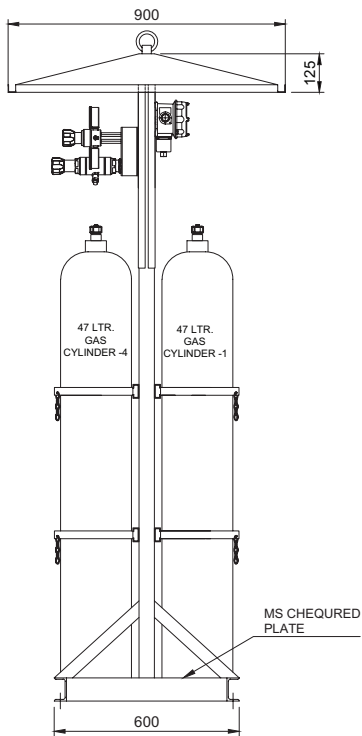
**DIMENSIONAL DETAILS OF AUTO CHANGEOVER SYSTEM**



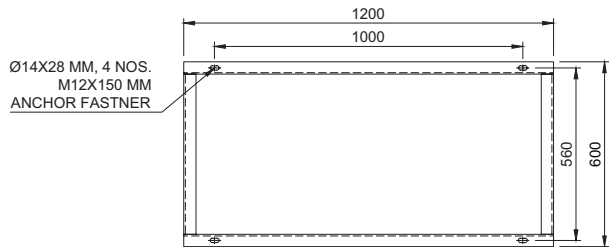
**REAR VIEW**



**FRONT VIEW**

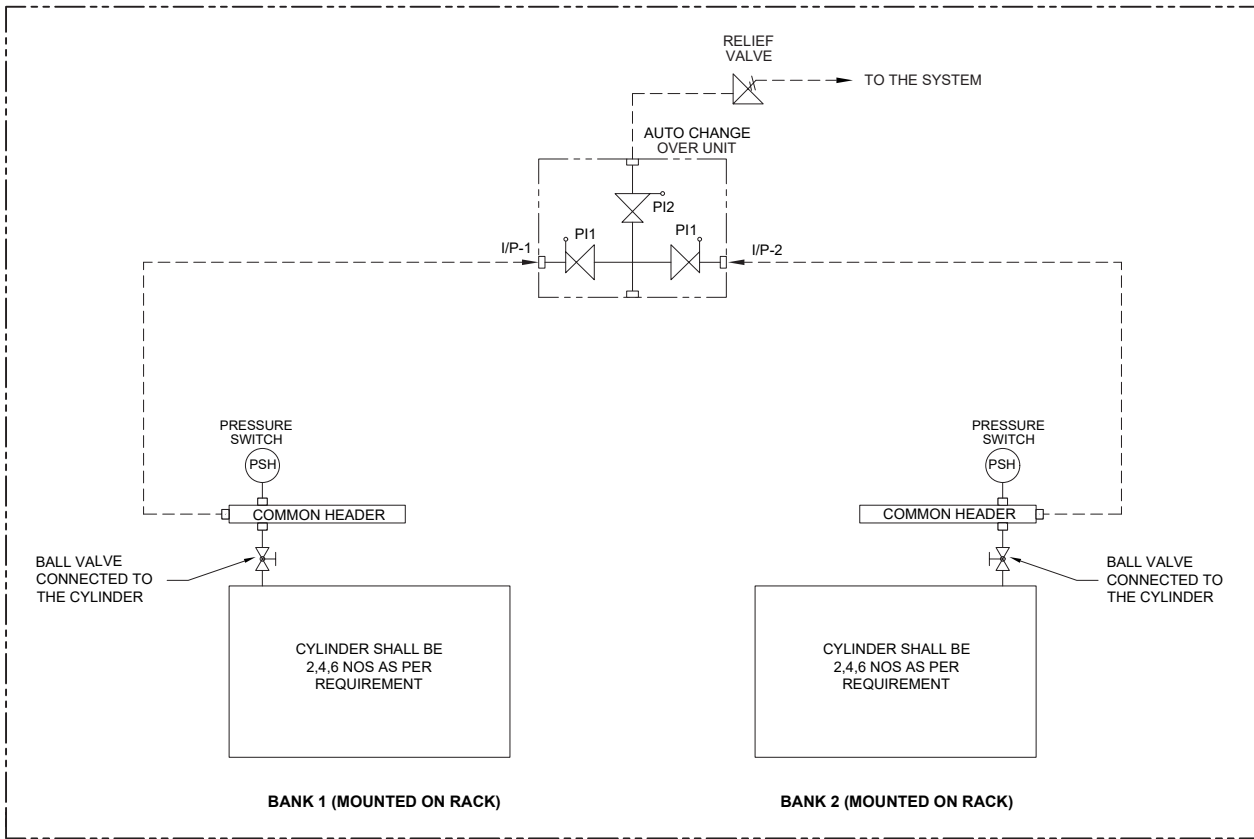


**R.H.S.VIEW**



**FOUNDATION DETAILS**

**SCHEMATIC DRAWING**



**SPECIFICATION OF CYLINDER RACK**

75x40 mm MS, ISMC C-Channel for Base
Duly powdered coated finished
Color: RAL 7035
Canopy : 1600(W) x 900(D) mm, 1.5mm thickness, MS Sheet steel
Mounting Plate: 1.5mm thickness, MS sheet Steel
Overall Dimension: 2100(H) x 1200(W) x 600(D) mm
All dimensions are subjected to the tolerance of ±5mm.
Over All weight: approximately 200 kg.

**ADDITIONAL ACCESSORIES**

Accessories	Model No.	Description	Qty
Auto changeover regulator	ACR1	Axis Standard Model	1 No.
	COM-1 COM-2B COM-2P	GO (Custom make)	
	KCA KCM	Swagelok (Custom make)	
	ACS 012 CS-2200 NA-4	Tescom (Custom make)	
Safety Relief Valve	RL3A	Swagelok, I/p pressure:20.6 bar, O/p pressure; 15.5 bar, Set pressure; 0.7 to 15.5 bar	1 No.
Ball Valve	SS-42GS4	Swagelok, 2-way Ball valve with 1/4" O.D. Connection	8 Nos.
Pressure Switch	J 120 Series	UE Makes J 120 Series, suitable to Hazardous and Safe area	1 No.
Bullnose connector		Axis Standard	8 Nos.
Cylinder chain		Axis Standard	8 Nos.
Common headers		Axis Standard, 3/4" Headers connection	1 No.
Bank Arrangement		In each bank 2,4,6 Nos. Cylinders shall be available as per requirements	1 No.